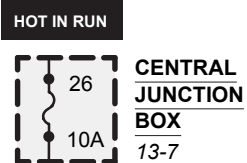


37-1 SHIFT LOCK

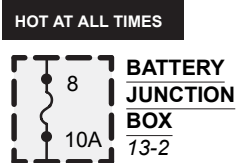
2001 F53

For diagnostic information, refer to Section 211-04 of the Workshop Manual.

SEE POWER DISTRIBUTION 13-7



SEE TURN/STOP/HAZARD LAMPS 90-2



SEE POWER DISTRIBUTION 13-2

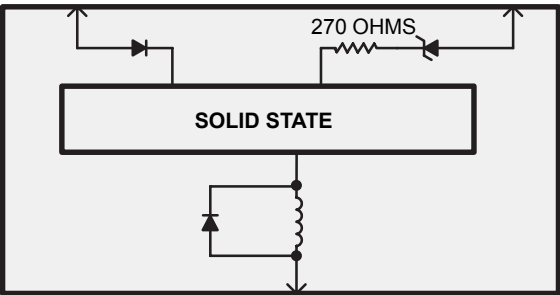
* BRAKE PEDAL POSITION (BPP) SWITCH CLOSED

Signals Shift Lock Actuator when Brake Pedal is depressed.



BRAKE PEDAL POSITION (BPP) SWITCH 90-2

SEE GROUNDS 10-4



SHIFT LOCK ACTUATOR

SEE GROUNDS 10-3

When Ignition Switch is in RUN, driver is unable to shift the automatic transmission out of PARK, unless the brake pedal is depressed.

Refer to Location Index, Cell 152, for Component, Connector, Splice, Ground and Base Part Number descriptions and locations.